



# REAL ESTATE PORTFOLIO

## Plymouth, MA



**Mark Sobel**

[msobel@1stusrealty.com](mailto:msobel@1stusrealty.com)

508.280.4563

508.591.3000

[www.1stusrealty.com](http://www.1stusrealty.com)



# **REAL ESTATE PORTFOLIO PLYMOUTH MA**

**JUST LISTED! Unique Portfolio**

**2 Properties with on-site parking For Sale**

**5-7 Water St; 10 Water St., Plymouth Center**

**Plymouth MA, a major tourist destination with abundant historical significance, celebrates its 400 year anniversary this year. The Downtown Harbor District encompasses the epicenter of the town's commerce, tourism and entertainment. An abundance of restaurants, specialty retailers, municipal and historical buildings plus harborfront activities creates a walkable village experience.**

**The Water St. Portfolio is comprised of 2 separate properties, each with a single story building currently zoned DH (Downtown/Harbor District). Both properties offer parking. Currently they are fully leased ---future redevelopment would enhance their value.**

**OFFERED AT \$1,400,000.**

**Total Building Size: 9,684 SF  
Total Land Area: .584 Acres**

**1<sup>st</sup> US Realty, as exclusive agent, will provide additional information to interested parties upon execution of a Non- Disclosure Agreement.**

**All information furnished is from sources deemed reliable but no warranty of representation is made as to the accuracy thereof and information is submitted subject to errors, omissions, change of price, rental or other conditions, prior sale or lease, or withdrawal without notice. Inquiring parties should make judgements and decisions based solely on their own due diligence**

**Mark Sobel, Commercial Real Estate Broker**

**1<sup>st</sup> U S Realty LLC**

**[msobel@1stusrealty.com](mailto:msobel@1stusrealty.com)  
508.280.4563**

**[www.1stusrealty.com](http://www.1stusrealty.com)  
508.591.3000**



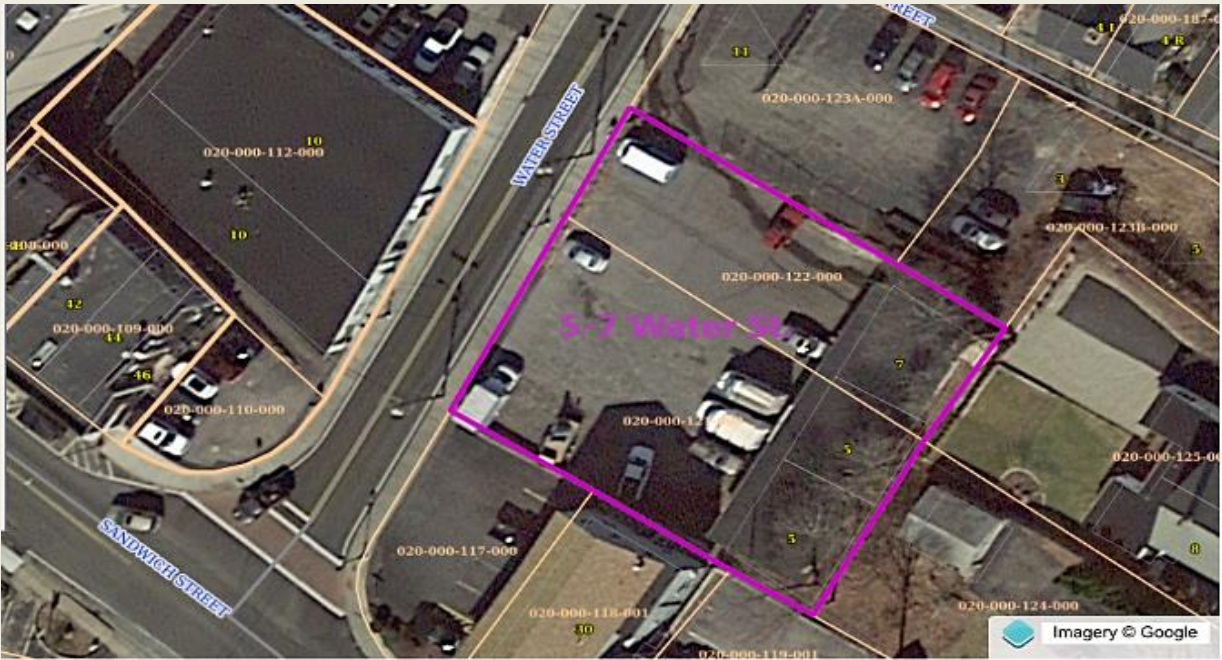
**5-7 Water St. Plymouth MA**

Parcel ID: 020-000-121-00Z

Land Area: .316 acres

Finished Area: 2,940 SF

Zoning: DH (Downtown/Harbor District)



**10 Water St. Plymouth MA**

Parcel ID: 020-000-112-000z

Land Area: .268 acres

Finished Area: 6,744 SF

Zoning: DH (Downtown/Harbor District)

