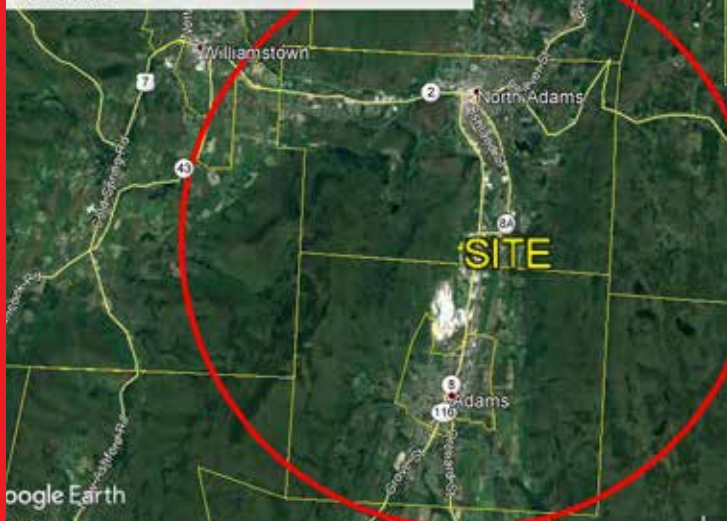


# Ground Lease 14.3 Acre Parcel

1637 Curran Hwy. Route 8, North Adams MA



1637 Curran Hwy. (Route 8) N. Adams MA  
Five Mile Radius



## GROUND LEASE

TERMS:	NEGOTIABLE
PARCEL SIZE:	14.3 Acres
ZONING:	INDUSTRIAL
ADT COUNT:	15,626 (Route 8)

## DEMOGRAPHICS

Radius	Population	Med. HH Income
5 miles	21,000	\$39,000

### For additional information contact:

Commercial Real Estate Broker  
Mark Sobel  
508-280-4563  
msobel@1stUSRealty.com



Office: 427 Columbia Road  
Hanover, MA 02339  
Mailing: PO Box 1261  
Plymouth, MA 02362

(508) 591 - 3000 | www.1stUSRealty.com

# Ground Lease 14.3 Acre Parcel

1637 Curran Hwy. Route 8, North Adams MA



1st U S Realty, as the exclusive leasing agent, is pleased to present a 14.3 acre parcel located on Route 8 near the Adams town line which is available for development. Site, located in close proximity to Walmart provides extensive frontage along the highway. Terms are negotiable.



All information furnished is from sources deemed reliable but no warranty of representation is made as to the accuracy thereof and information is submitted subject to errors, omissions, change of price, rental or other conditions, prior sale or lease, or withdrawal without notice. Inquiring parties should make judgments and decisions based solely on their own due diligence.

## For additional information contact:

Commercial Real Estate Broker  
Mark Sobel  
508-280-4563  
msobel@1stUSRealty.com



Office: 427 Columbia Road  
Hanover, MA 02339  
Mailing: PO Box 1261  
Plymouth, MA 02362

(508) 591 - 3000 | [www.1stUSRealty.com](http://www.1stUSRealty.com)