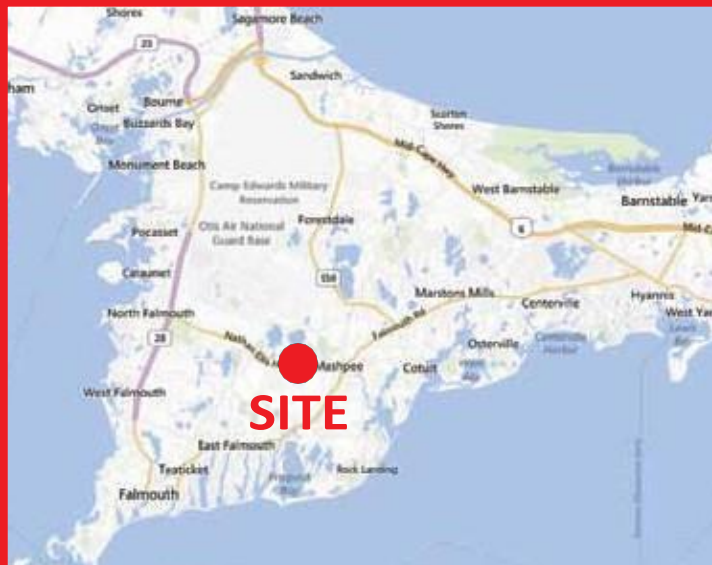
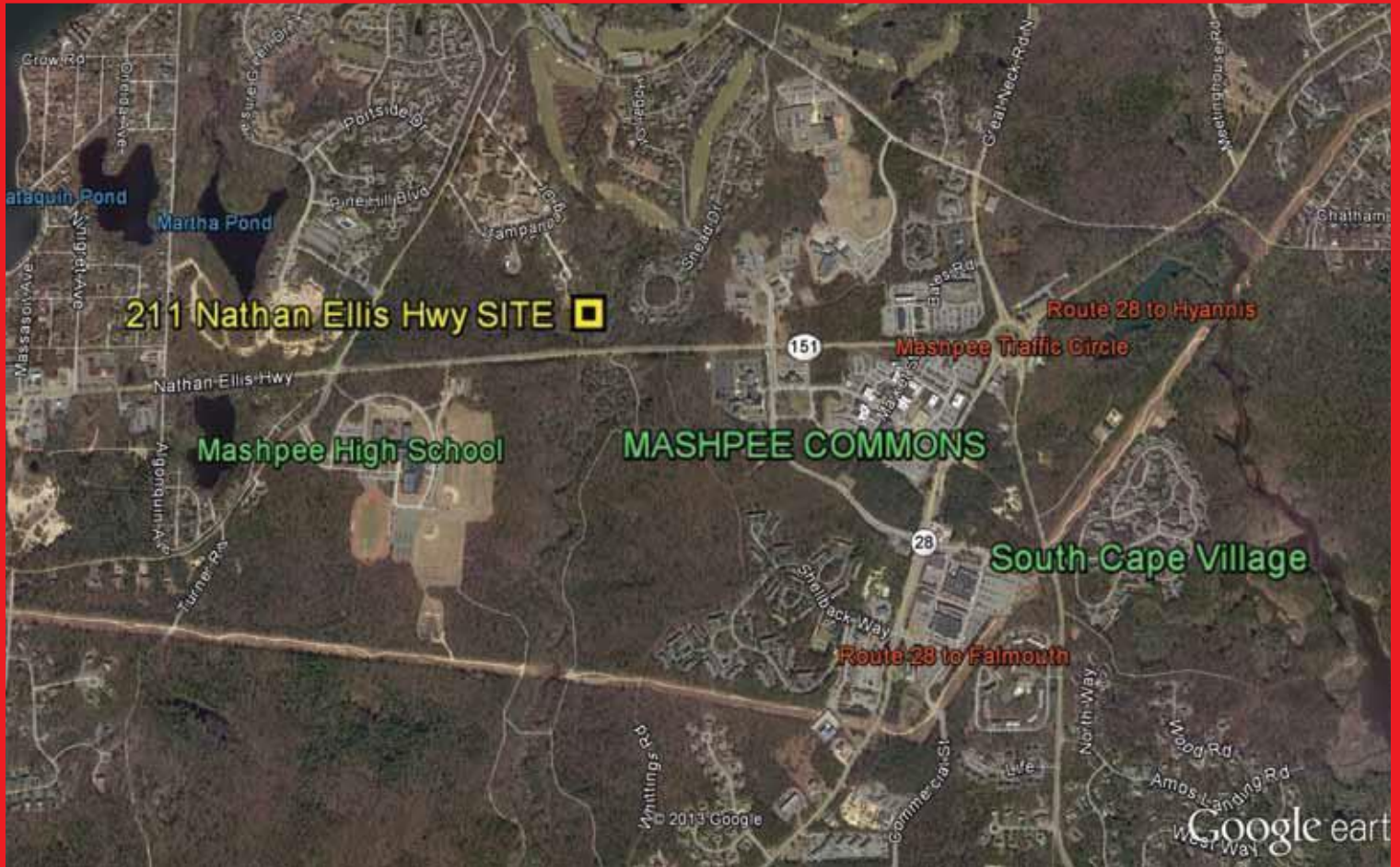


FOR SALE 3.04 Acres on Route 151

211 Nathan Ellis Hwy., Mashpee, MA 02649



AVAILABLE SPACE OVERVIEW

Land for Sale 3.04 Acres
Zoning: R5
ADT Route 151 : 17,505
Sales Price is Negotiable

TRADE AREA DEMOGRAPHICS

Radius	Population	Med. HH Income
3 miles	13,883	\$60,714
5 miles	38,021	\$63,963

For additional information contact:

Commercial Real Estate Broker
 Mark Sobel
 508-280-4563
 msobel@1stUSRealty.com



Office: 427 Columbia Road
 Hanover, MA 02339
 Mailing: PO Box 1261
 Plymouth, MA 02362

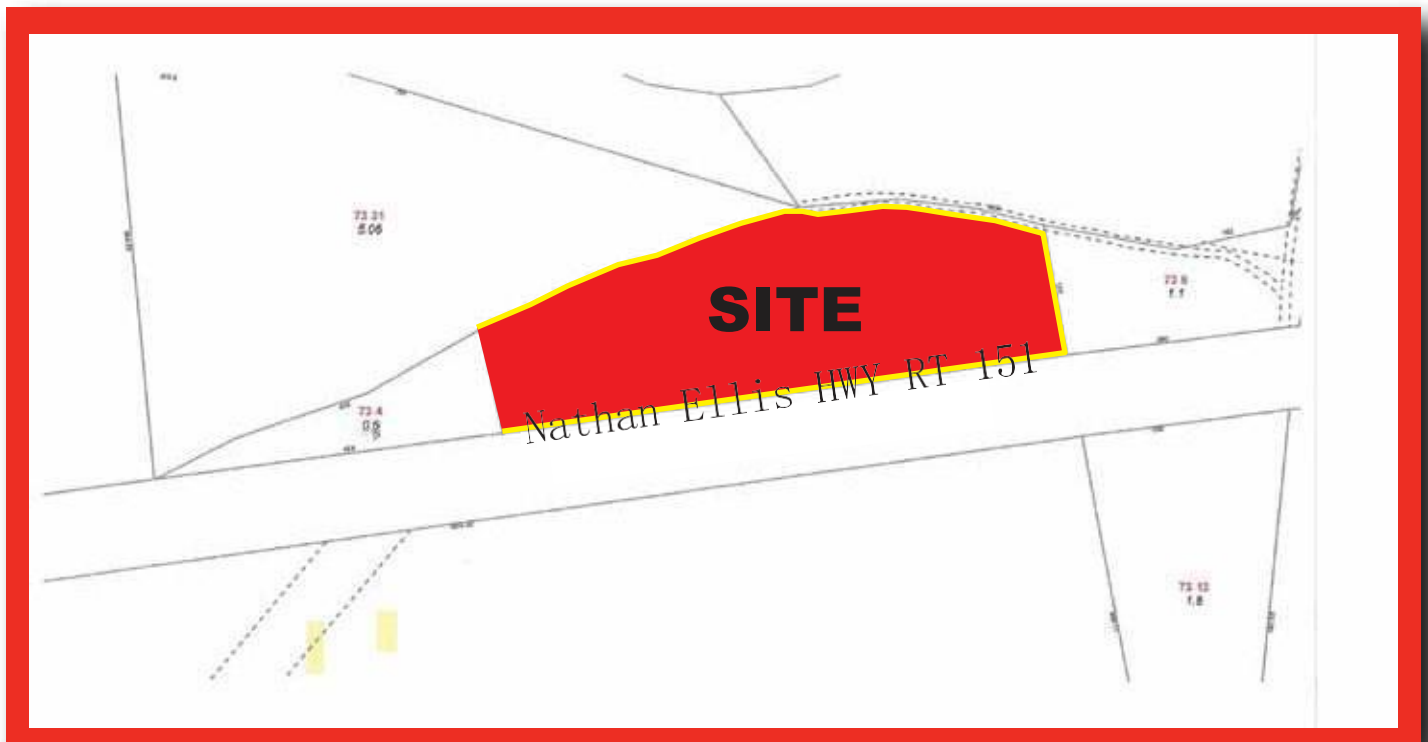
(508) 591 - 3000 | www.1stUSRealty.com

FOR SALE 3.04 Acres on Route 151

211 Nathan Ellis Hwy., Mashpee, MA 02649



1st U S Realty presents an unusual opportunity: 3.04 acres of undeveloped land on Route 151 in Mashpee, close to the dynamic heart of retail activity in that section of the Cape. Located ½ mile west of the Mashpee traffic circle and close to Mashpee Commons, the site has +/- 700 linear feet of frontage on Route 151. For the right party/opportunity, this undeveloped land has excellent potential.



All information furnished is from sources deemed reliable but no warranty of representation is made as to the accuracy thereof and information is submitted subject to errors, omissions, change of price, rental or other conditions, prior sale or lease, or withdrawal without notice. Inquiring parties should make judgments and decisions based solely on their own due diligence.

For additional information contact:

Commercial Real Estate Broker
Mark Sobel
508-280-4563
msobel@1stUSRealty.com



Office: 427 Columbia Road
Hanover, MA 02339
Mailing: PO Box 1261
Plymouth, MA 02362

(508) 591 - 3000 | www.1stUSRealty.com