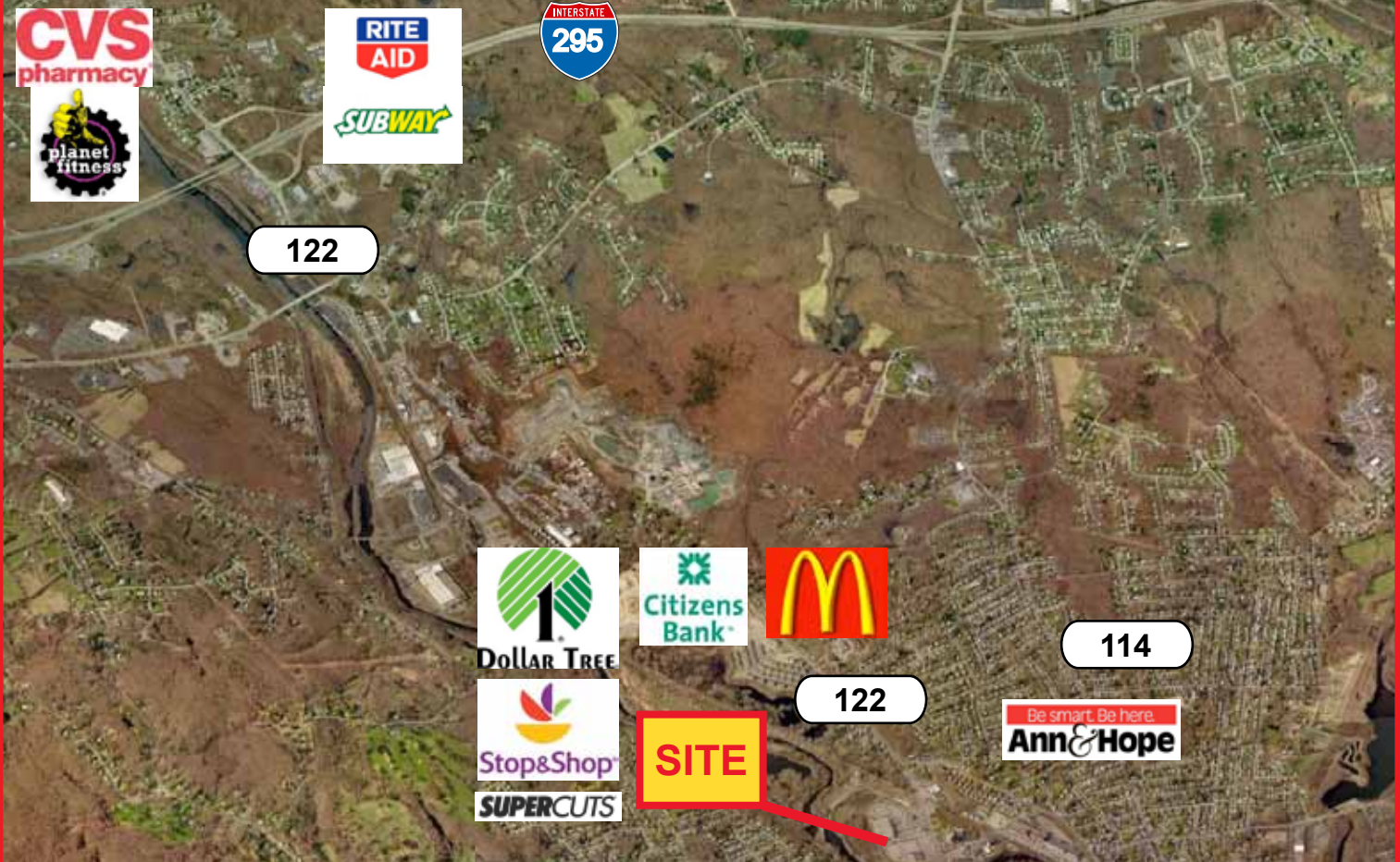


Cumberland R I Shopping Plaza

70 Mendon Rd. RT 122, Cumberland, RI 02864



Plaza Highlights

- Anchored by Stop & Shop
- Pad Site for Lease
- Route 122 near Broad St
- 83,000 Population in 3 mile trade area

AVAILABLE SPACE OVERVIEW

Pad Opportunity	35,000 SF
Plaza GLA	166,776 SF
ADT Count	13,423

TRADE AREA DEMOGRAPHICS

Radius	Population	Med. HH Income
1 mile	11,217	\$68,176
3 miles	83,704	\$43,287
5 miles	207,173	\$49,224

For additional information contact:

Commercial Real Estate Broker
 Mark Sobel
 508-280-4563
 msobel@1stUSRealty.com



Office: 427 Columbia Road
 Hanover, MA 02339
 Mailing: PO Box 1261
 Plymouth, MA 02362

(508) 591 - 3000 | www.1stUSRealty.com

Cumberland RI Shopping Plaza

70 Mendon Rd. RT 122, Cumberland, RI 02864



1st U S Realty offers space for lease in Cumberland at a Stop & Shop anchored plaza with co-tenants including Dollar Tree, Super Cuts, Mc Donald's, and Citizen Bank. There exists an opportunity to develop a 35,000 SF pad site. -

Location Description

70 Mendon Rd. (Route 122) is a busy neighborhood plaza anchored by Stop & Shop. The Blackstone Bike Path (17 miles) creates a picturesque backdrop for the center. Excellent spot for a restaurant or retailer.



All information furnished is from sources deemed reliable but no warranty of representation is made as to the accuracy thereof and information is submitted subject to errors, omissions, change of price, rental or other conditions, prior sale or lease, or withdrawal without notice. Inquiring parties should make judgements and decisions based solely on their own due diligence.

For additional information contact:

Commercial Real Estate Broker
Mark Sobel
508-280-4563
msobel@1stUSRealty.com



Office: 427 Columbia Road
Hanover, MA 02339
Mailing: PO Box 1261
Plymouth, MA 02362

(508) 591 - 3000 | www.1stUSRealty.com